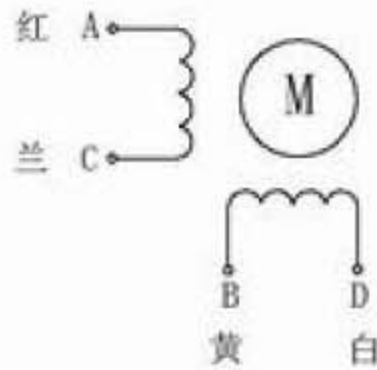
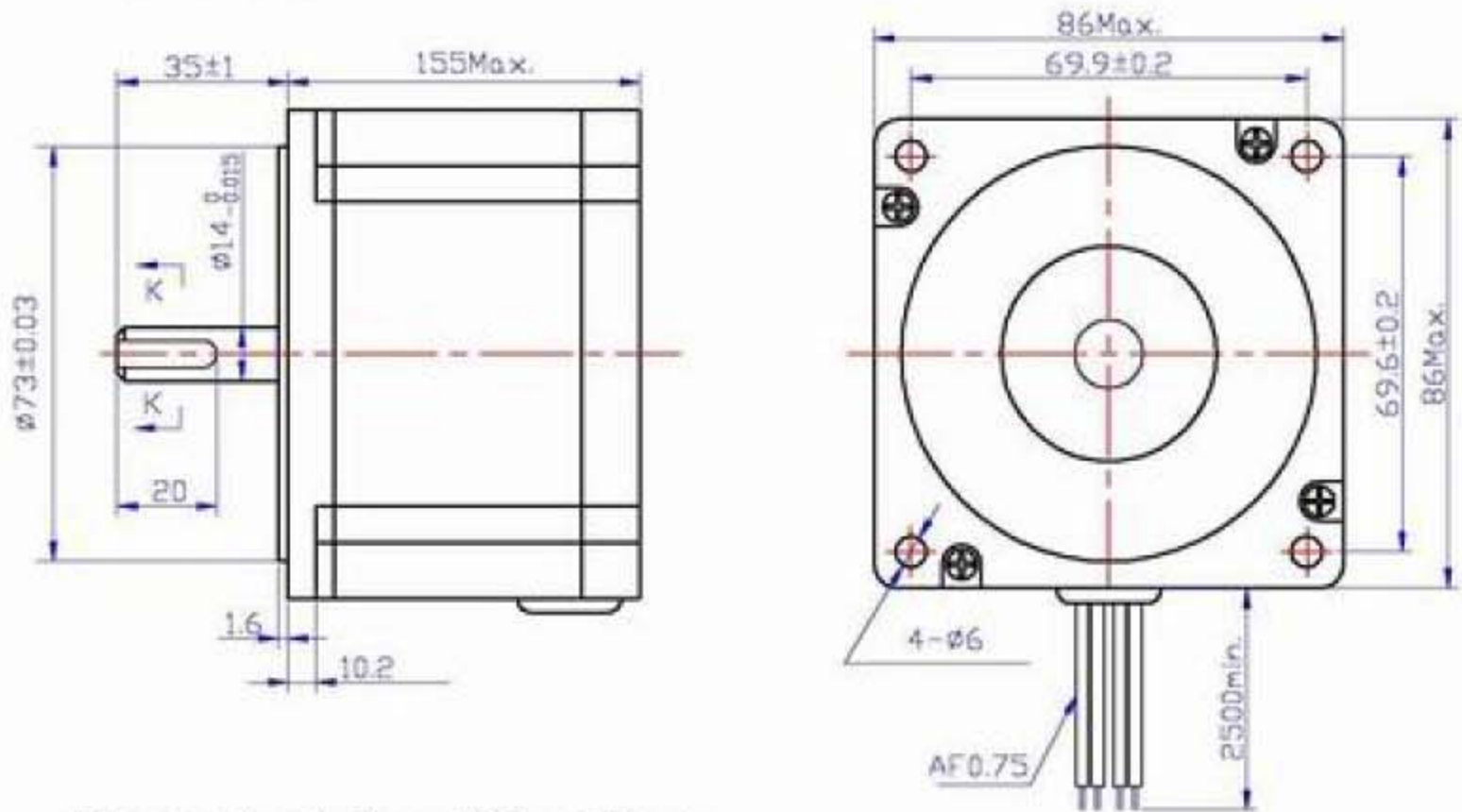


HYBRID STEPPING MOTOR 86BYGH155

Wiring Diagram:



Dimensions:
 (unit=mm)



Electrical Specifications

STEP ANGLE	1.8	° /STEP	COMMENT
RATED VOLTAGE	3.9	V	
CURRENT	6.5	A/PHASE	
RESISTANCE	0.6	Ω /PHASE	
INDUCTANCE	7	mH/PHASE	
HOLDING TORQUE	100	Kg. cm	
INSULATION CLASS	B		

更改	数量	更改单号	签名	日期
编制				
审核				
批准				

86BYGH155
 技术条件

咨询热线
 4006-033-880

北京多普康自动化技术有限公司
www.top-cnc.com